

<h1>SPECIFICATIONS</h1>

[General Specifications]

Model	5 tiers	MR6-502□※1L-△△△△△※2				
	4 tiers	MR6-402□L-△△△△				
	3 tiers	MR6-302□L-△△△				
	2 tiers	MR6-202□L-△△				
	1 tier	MR6-102□L-△				
UL Registered Model		-				
Rated Voltage		24 V DC				
Operating Voltage Range		Rated Voltage ±10%				
Signal Wire Current	Typ.	Per Unit				
		Red: 44.3mA	Amber: 37.0mA	Green: 35.8mA	Blue: 34.0mA	White: 37.0mA
	Max.	Buzzer: 7.7mA				
		Per Unit				
Rated Power Consumption	Typ.	Per Unit				
		Red: 1.06W	Amber: 0.89W	Green: 0.84W	Blue: 0.82W	White: 0.89W
	Max.	Buzzer: 0.19W				
		Per Unit				
Operating Ambient Temperature		-20 °C to +50 °C				
Operating Ambient Humidity		Less than 90 % (No condensation)				
Storage Ambient Temperature		-30 °C to +65 °C				
Storage Ambient Humidity		Less than 90 % (No condensation)				
Mounting Location		Indoors				
Mounting Direction		Upright				
Protection Rating		IP 54 (IEC 60529)				
Environmental Condition		-				
Vibration Resistance		19.6m/s ² (at 30Hz) (IEC 60068-2-6)				
Insulation Resistance		More than 1MΩ at 500VDC between the terminals and the chassis				
Withstand Voltage		500VAC applied for 1min between terminals and chassis without breaking insulation				
Flashing Rate		-				
Sound Pressure Level		Min : 90 dB				
Environmental Condition		Front direction from the center/at 30cm				
Mass (Tolerance ±10%)		【No Buzzer】 1 tier: 330g 2 tiers: 370g 3 tiers: 410g 4 tiers: 450g 5 tiers: 490g 【Buzzer】 1 tier: 345g 2 tiers: 385g 3 tiers: 425g 4 tiers: 465g 5 tiers: 505g				
Outer Dimensions		Refer to the Outer Dimension Drawing				
Conformity Standards		EMC Directive (EN 61000-6-4, EN 61000-6-2) RoHS Directive (EN IEC 63000)				
Remarks		※1: □=B/(Blank) (B=Buzzer,Blank=Lighting only) ※2: △=R/Y/G/B/C (LED Unit Color: R=Red, Y=Amber, G=Green, B=Blue, C=White) ※3: About "△△△△△" is LED Color Location, from Left side to right side means Top to Bottom. Conforms to the CE Requirements Conforms to the UKCA Requirements				

Model No. Configuration

MR6-□ 02BL-□□□□□

Light Style

- 1:1 Tier
- 2:2 Tiers
- 3:3 Tiers
- 4:4 Tiers
- 5:5 Tiers

Rated Voltage

02:24V DC

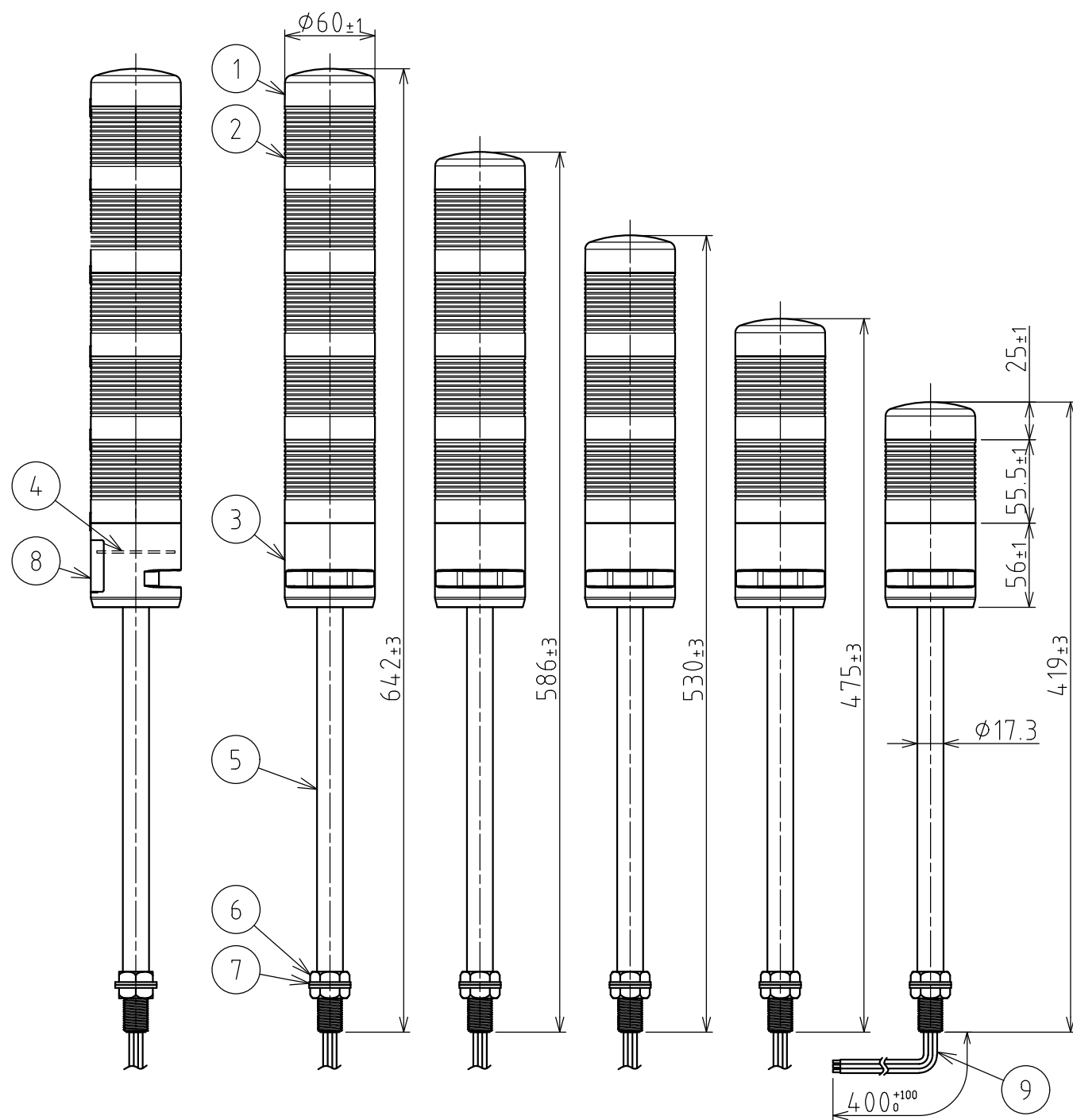
Type

- B:Continuous Light and Alarm
- Blank:Continuous Light

LED Unit Color

(R:Red / Y:Amber / G:Green / B:Blue / C:White)
* Lens Color from top to bottom

Dimensions

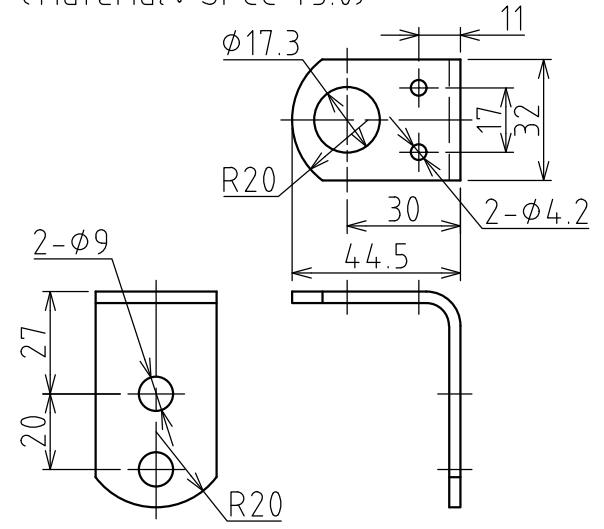


指定公差 General tolerance	角度公差 Angular tolerance ±[°]			寸法公差 Dimensional tolerance ±[mm]							
	短辺長さ Length of short side	~	~100	精 f	0.05	0.1	0.2	0.4	0.6		
	精 f	1	0.5	0.3	0.1	中 m	0.1	0.3	0.5	0.7	1
	粗 v	3	1.5	1	0.5	粗 c	0.3	0.5	1	1.2	2

図番 Drawing No.	MR6-502L-W18	
改訂 Rev.	年月日 Date	改訂履歴 Revisions

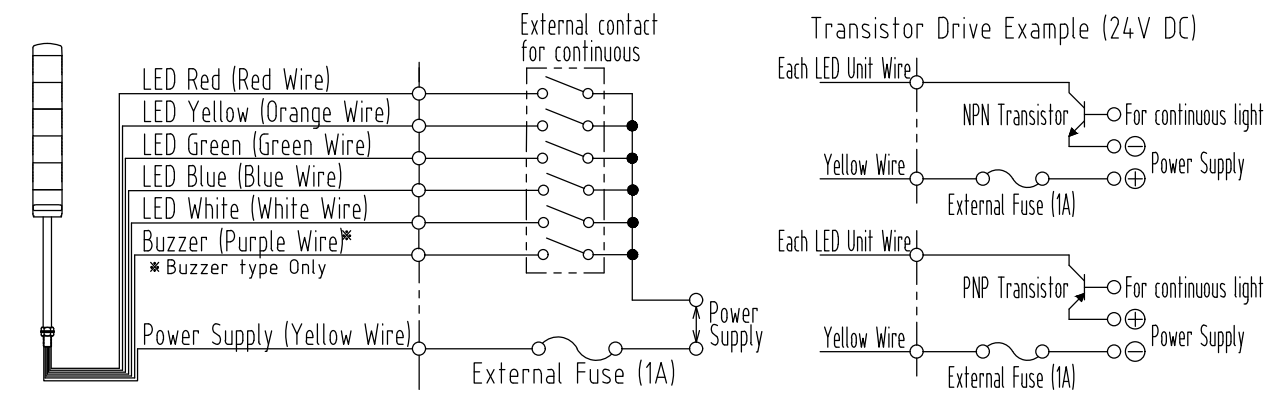
Accessory

L-Bracket Dimensions
(Material: SPCC t3.0)



Wiring Example

(Wire:UL1007/AWG24)



9	Power Wire Assembly	1	
8	Nameplate	1	
7	Flat Washer	2	φ 28× φ 17.5 t=2.0
6	Hexagon Nut	2	M17,P1.5,Oppsite side 23
5	Pole	1	AL Silver
4	Buzzer PCB Assembly	1	(Buzzer type only)
3	Body	1	ABS Light Gray
2	LED Unit	1~5	PC(Red,Amber,Green,Blue,White)
4	Head Cover	1	ABS Light Gray
番号 No.	部品名 Part Name	数量 Qty.	記事 Remarks

機種 Model	MR6-□ 02(B)L	特注No. S.P.No.	-	図名 Name	Outer Dimensions Drawing
品目コード Part No.	-	尺度 Scale	-	三角法 3rd Angle P.	単位 Unit mm
		株式会社 PATLITE Corporation			